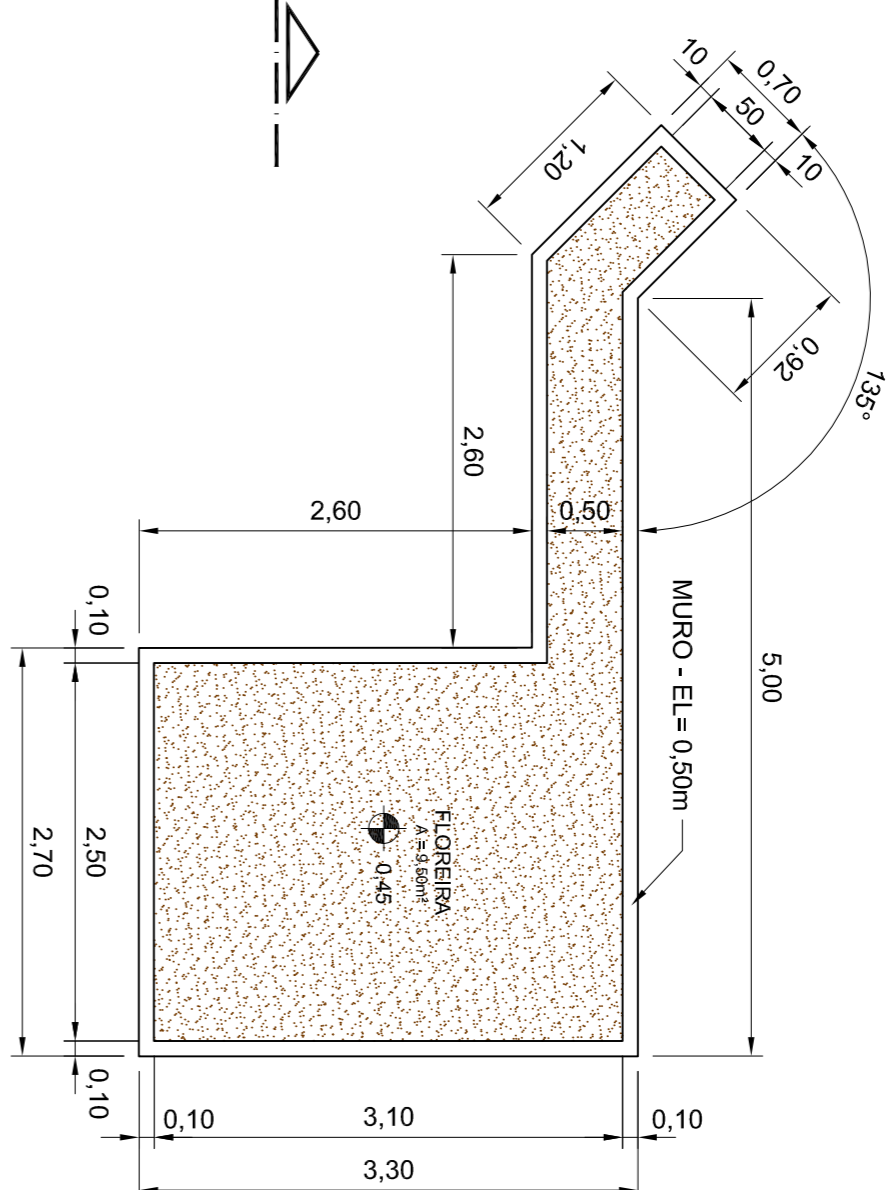
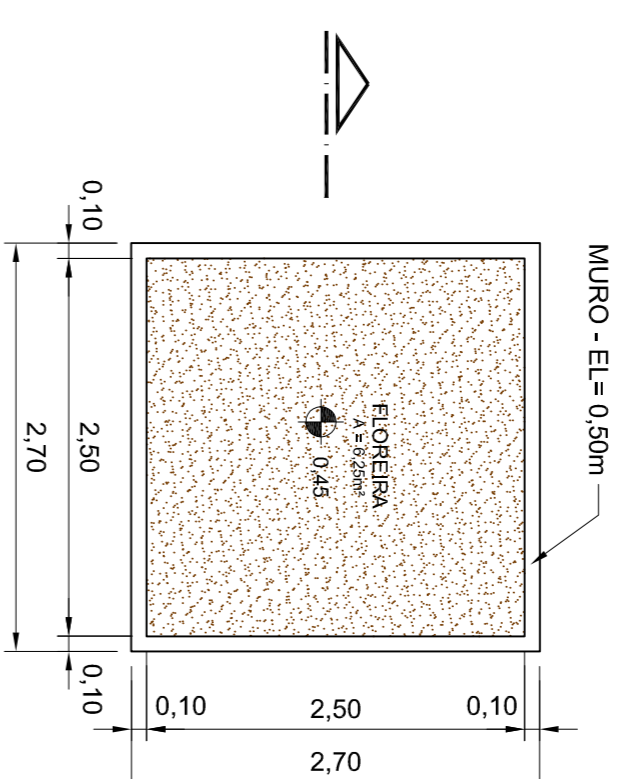


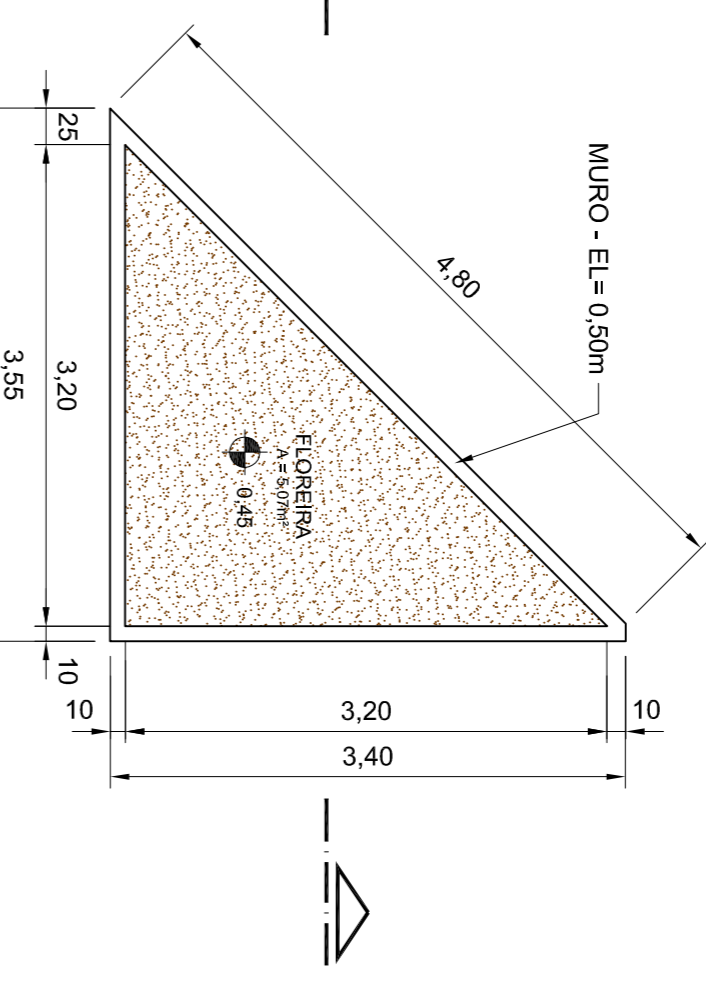
DETALHE 11 - FLOREIRA DE ACESSO 1
ESC.: 1:50



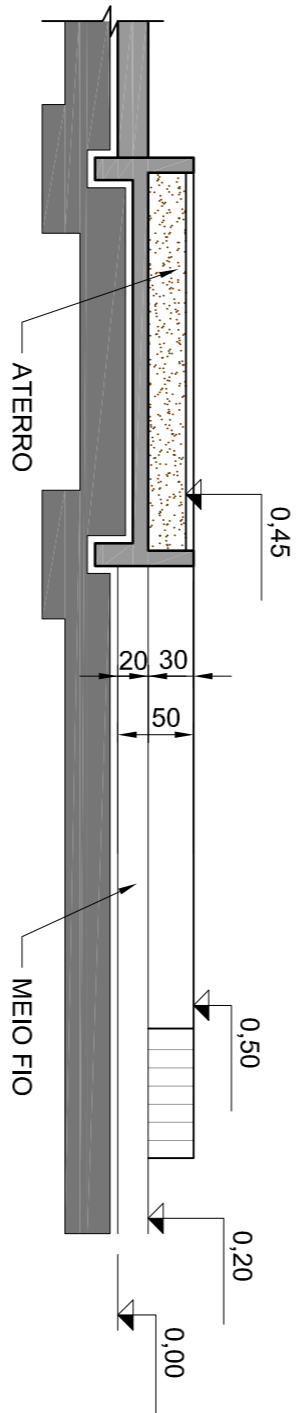
DETALHE 12 - FLOREIRA DE ACESSO 2
ESC.: 1:50



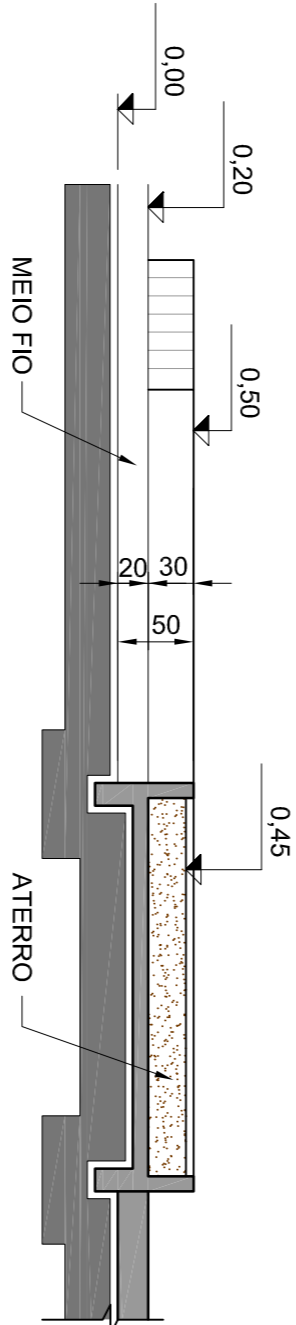
DETALHE 13 - FLOREIRA TIPO
ESC.: 1:50



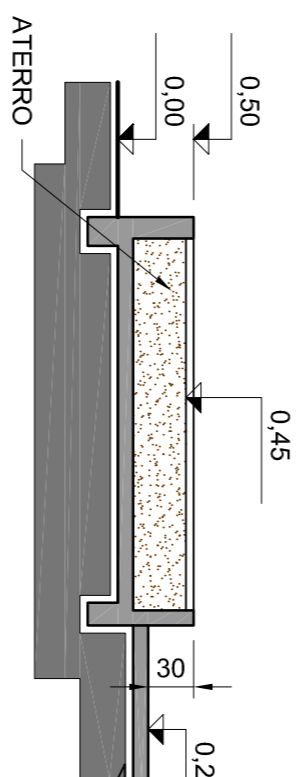
DETALHE 14 - FLOREIRA
ESC.: 1:50



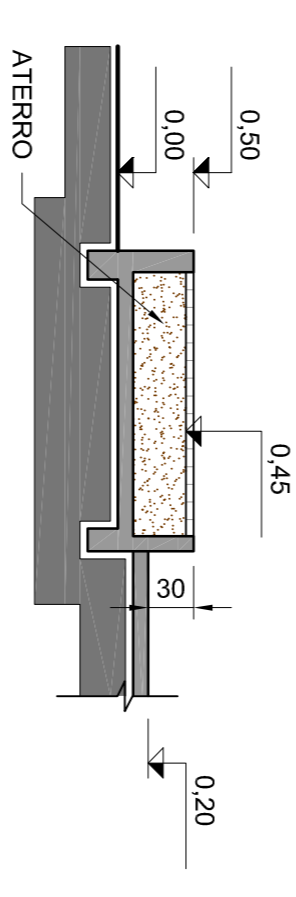
CORTE LONGITUDINAL DO DETALHE 11
ESC.: 1:50



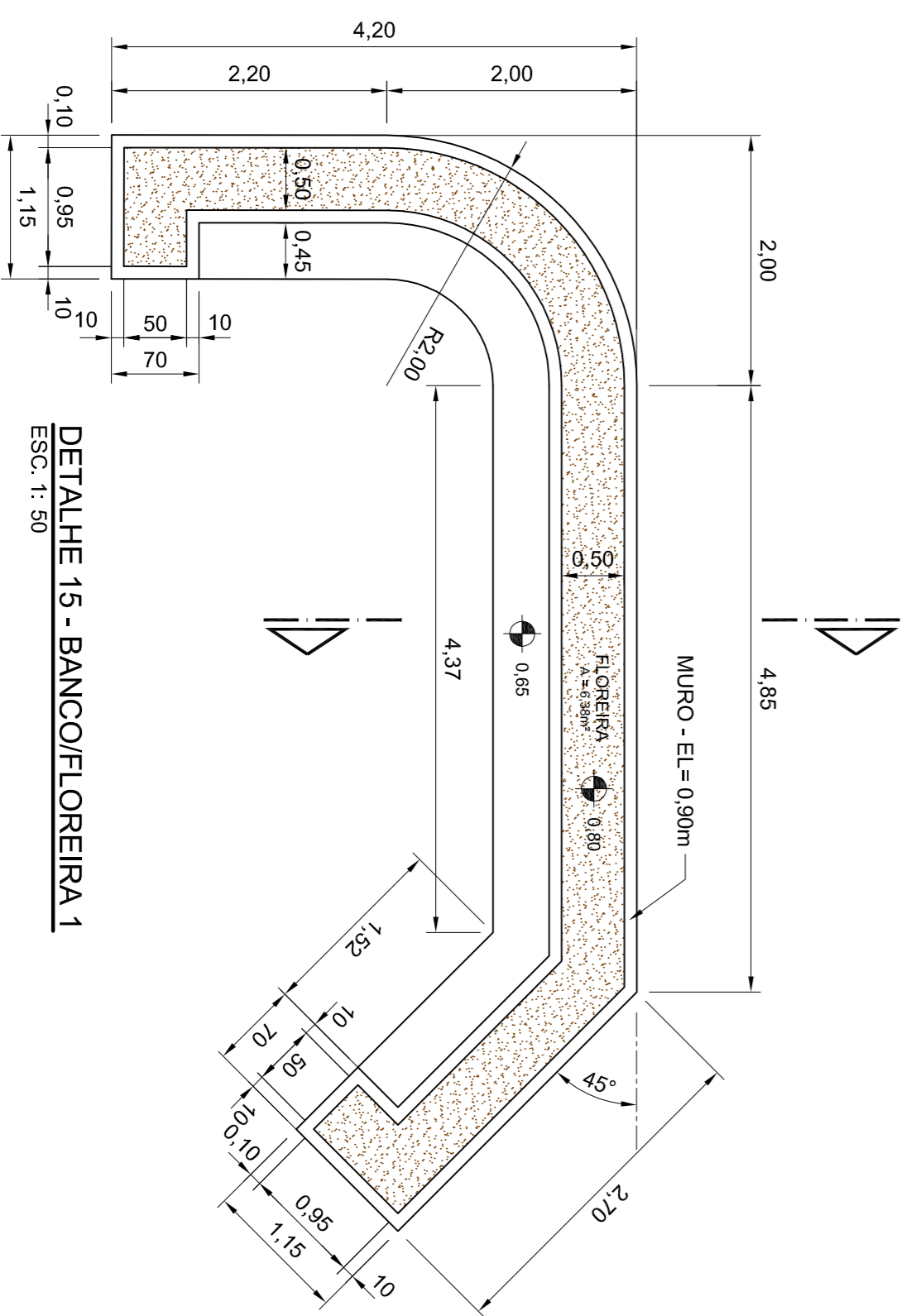
CORTE LONGITUDINAL DO DETALHE 12
ESC.: 1:50



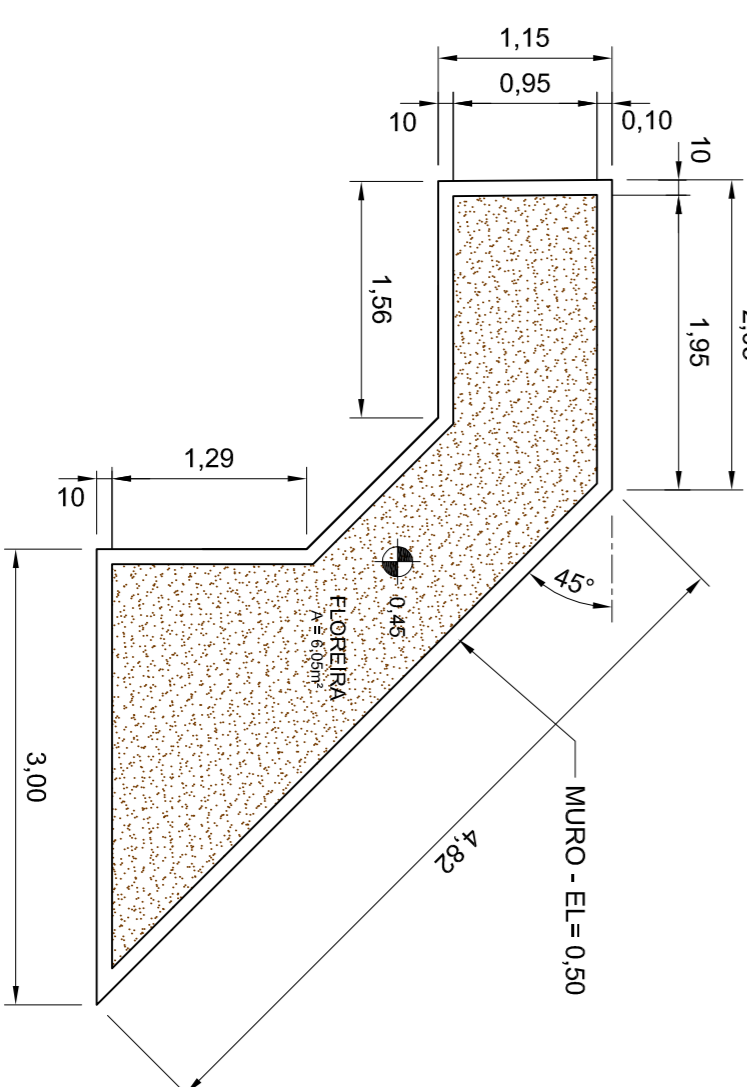
CORTE LONGITUDINAL DO DETALHE 13
ESC.: 1:50



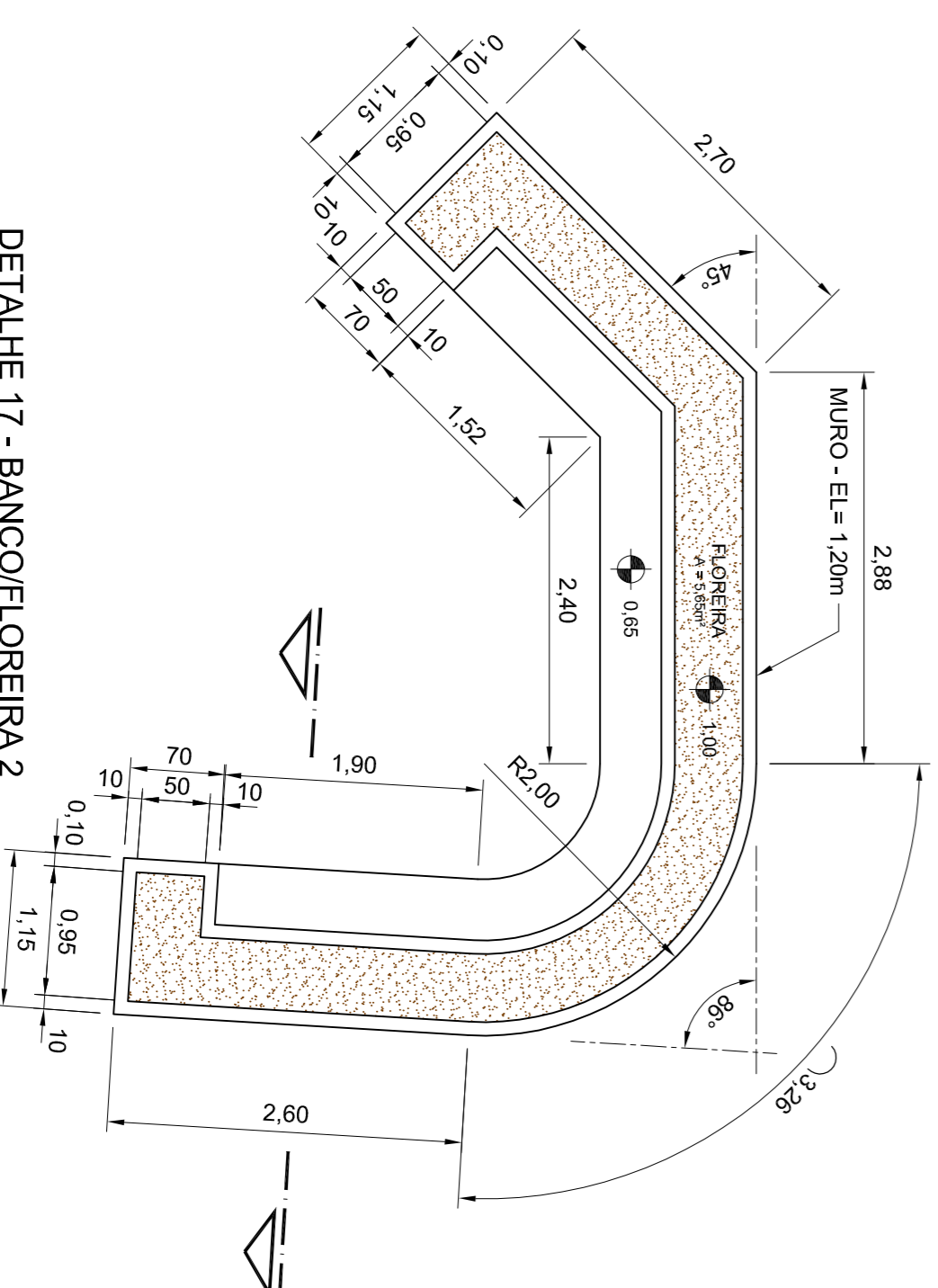
CORTE LONGITUDINAL DO DETALHE 14
ESC.: 1:50



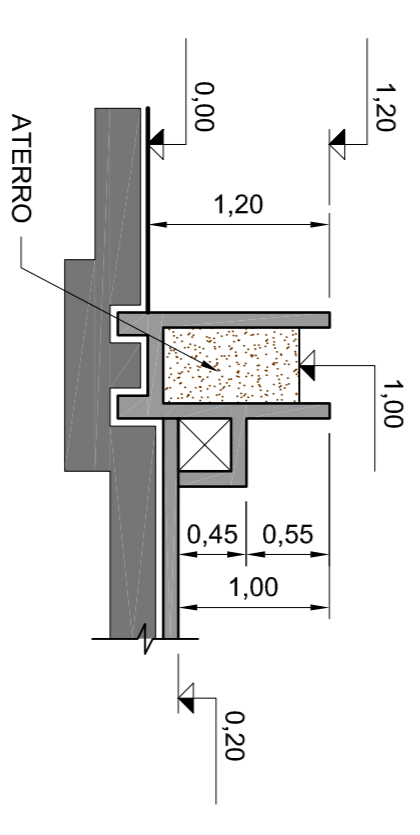
DETALHE 15 - BANCO/FLOREIRA 1
ESC.: 1:50



DETALHE 16
ESC.: 1:50



DETALHE 17 - BANCO/FLOREIRA 2
ESC.: 1:50



CORTE TRANSVERSAL TÍPICO DOS BANCOS / FLOREIRAS
ESC.: 1:50

REVITALIZAÇÃO DA PRAÇA ISABEL BRACO

Prefeitura Municipal de Jaguaratãiva

Praça Isabel Branco 142 - Cidade Alta - Fone (43) 3535-9400 - Fax (43) 3535-9400
Jaguaratãiva - PR - CEP: 84.200-000 - CNPJ 76.910.900/0001-38
Secretaria Municipal de Infraestrutura e Habitação

2016 - 2020
JOSÉ SILOBA
PREFEITO MUNICIPAL

TÍTULO: VISTA, CORTES E DETALHES
RESPONSÁVEL TÉCNICO: RESERVA
DESENHO: YVES
DATA: 28/04/2019
FOLHA: 3 DE 6
ESCALA: INDICADA